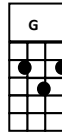
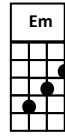
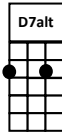
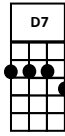
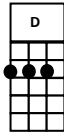
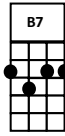
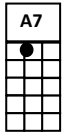
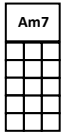
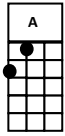


SONG 1 EDELWEISS by JB 3/4 time STRUM Ddd

Song 2 Doh re mi by AP STRUM DuD

INTRO 1234 then G CHORD arpeggio
Then Strum G
Voice starts on low B



[A] [Am7] [A7] [B7] [C] [D] [D7] [D7alt] [Em] [G]

SONG1 *strum waltz* **DDuD 1 2 and 3**

[G] EDEL- [D] WEISS, [G] EDEL- [C] WEISS

[G] EVERY [Em] MORNING YOU [Am7] GREET [D7] ME

[G] SMALL AND [D] WHITE, [G] CLEAN AND [C] BRIGHT

[G] YOU LOOK [D7] HAPPY TO [G] MEET ME

[D] BLOSSOM OF SNOW, MAY YOU [G] BLOOM AND GROW

[C] BLOOM AND [A7] GROW FOR [D]EV- [D7] ER

[G] EDEL- [D] WEISS, [G] EDEL- [C] WEISS

[G] BLESS MY [D7] HOMELAND FOR [G] EVER

Repeat [G] BLESS MY [D7] HOMELAND FOR [G] EVER (Then we all pause)

Song 2 Solo - NEIL ALONE plays and sings the first line of song 2 as follows :

NOTE change of strum: DuD *chuck a doo*

[G] Doh, a deer a female deer [D] re, a drop of golden sun

Then ALL join in playing and singing from this point on:

[G] mi, a name I call myself [D] fah, a long long way to run,

[G] soh, a needle pulling [C]thread, [A] lah, a note to follow [D]soh,

[B7] Te, a drink with jam and [Em] bread,

SLOWER that will **MUCH SLOWER** [C] bring us [D] back to **Straight into SONG 1**

[G] EDEL- [D] WEISS, [G] EDEL- [C] WEISS

[G] EVERY [Em] MORNING YOU [Am7] GREET [D7] ME

[G] SMALL AND [D] WHITE, [G] CLEAN AND [C] BRIGHT

[G] YOU LOOK [D7] HAPPY TO [G] MEET ME

[D] BLOSSOM OF SNOW, MAY YOU [G] BLOOM AND GROW

[C] BLOOM AND [A7] GROW FOR [D]EV- [D7] ER

[G] EDEL- [D] WEISS, [G] EDEL- [C] WEISS

[G] BLESS MY [D7] HOMELAND FOR [G] EVER

Repeat last line slowly : strum arpeggios with thumb

[G!] BLESS MY [D7!] HOMELAND FOR [G!] EV [G!] ER