

THE CALYPSO CAROL

Voice - Verses start on note G

STRUM

4/4 KEY C

D - Du - u Du

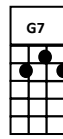
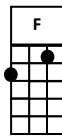
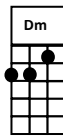
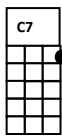
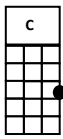
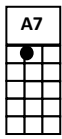
1& 2& 3& 4&

Advanced STRUM

D D(Roll) U mute U D u

Count 1234 before **INSTRUMENTAL** for first **CHORUS**

Version 2 12/09/18 JB

**SOLO (Jill) and INSTRUMENTAL (ANDY) ONLY FOR THIS CHORUS**

Voice starts on high C [F] OH, NOW CARRY ME TO [C] BETHLEHEM
 TO [G7] SEE THE LORD [C] APPEAR TO MEN
 [A7] JUST AS POOR AS WAS THE [Dm] STABLE THEN
 THE [G7] PRINCE OF GLORY WHEN HE [C] CAME

voice starts on G

LADIES
SING

[C] SEE HIM ALYING ON [Dm] A BED OF STRAW
 [G7] DRAUGHTY STABLE WITH AN [C] OPEN DOOR
 MARY CRADLING THE [Dm] BABE SHE BORE
 THE [G7] PRINCE OF GLORY IS HIS [C] NAME

CHORUS Jill solo with Andy

MEN
SING

[C] STAR OF SILVER SWEEP [Dm] ACROSS THE SKIES
 [G7] SHOW WHERE JESUS IN THE [C] MANGER LIES
 SHEPHERDS SWIFTLY FROM [Dm] YOUR STUPOR RISE
 TO [G7] SEE THE SAVIOR OF THE [C] WORLD

CHORUS Jill solo with Andy

ALL
SING

[C] ANGELS, SING AGAIN THE [Dm] SONG YOU SANG
 [G7] BRING GOD'S GLORY TO THE [C] HEART OF MAN
 SING HOW BETHL'HEMS LITTLE [Dm] BABY CAN
 [G7] BE SALVATION TO THE [C] SOUL

CHORUS Quietly as instrumental with Jill solo

[F] OH, NOW CARRY ME TO [C] BETHLEHEM
 TO [G7] SEE THE LORD [C] APPEAR TO MEN
 [A7] JUST AS POOR AS WAS THE [Dm] STABLE THEN
Slow down this last line

THE [G7] PRINCE OF GLORY WHEN HE [C!] CAME [!] = single strum