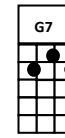
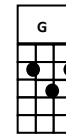
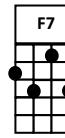
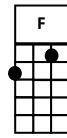
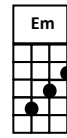
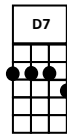
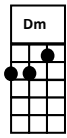
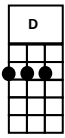
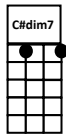
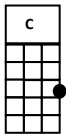


# Easy CAROLINA IN THE MORNING



[C] [C#dim7] [D] [Dm] [D7] [Em] [F] [F7] [G] [G7]

Follow Geoff

[C] NOTHING COULD BE [Em] FINER THAN [C] TO BE IN

[C#dim7] CAROLINA IN THE [G] MORN-[G7] ING

[F] NO ONE COULD BE [Dm] SWEETER THAN MY [Dm] SWEETIE

[Dm] WHEN I MEET HER [Dm] IN THE MORN-[G7] ING.

[F] WHERE THE MORNING [C] GLOR-[C7] IES [F] TWINE AROUND THE [C] DOOR,

[D] WHISPERING [D7] PRETTY [G7] STORIES

[Am] I LONG TO [D7] HEAR ONCE [G] MORE.

[C] STROLLING WITH MY [Em] GIRLIE WHERE THE [C] DEW IS

[C#dim7] PEARLY EARLY IN THE [G] MORN-[G7] ING,

[Dm] BUTTERFLIES ALL [Dm] FLUTTER UP [Dm] AND KISS EACH LITTLE

[Dm] BUTTERCUP AT [Dm] DAWN-[G7] ING

[C] IF I HAD [F] ALADDIN'S LAMP FOR [C] ONLY A DAY, [F] I'D

[F7] MAKE A WISH AND [D7] HERE'S WHAT I'D [G7] SAY:

[C] NOTHING COULD BE [Em] FINER THAN [C] TO BE IN

[D7] CAROLINA IN THE [G7] MORN-[C] ING